

成功幫浦® SUCCESS PUMP

GENERAL SERIES CATALOG

綜合系列產品

SINCE 1959



正字標記產品

ISO9001認證合格工廠

CNS Standard Approved Product

ISO9001 Certified Factory



日義科技有限公司

ANDA TECHNOLOGY CO., LTD.

型式僅供參考如有變更不另行通知

This catalog is for reference only.

2016-7

SUCCESS PUMP

日義公司簡介

日義科技有限公司於西元2007年承襲擁有相當歷史商標的“成功幫浦”成功幫浦的演進，於西元1937年創辦人，呂能先生，來自澎湖島修船機械技術創立呂鐵工廠，再於西元1959年更改為成功工程行，生產冷凍空調設備。其中，「水幫浦」是主要產品之一。當時水幫浦只採用一般棉紗填料(**GLAND PACKING**)，這種型式的軸封容易造成漏水，使冷凍空調無法達到預期溫度，經過研究與開發，自美國引進機械軸封(**MECHANICAL SEAL**)，並與東元電機公司合作開發，成功型東元直結式抽水機專用馬達。推出台灣第一台採用機械軸封的成功幫浦（直結式抽水機），即成功幫浦問世，並受各界好評採用。

About Us:

In 2007, Anda Technology Co., LTD. Was able to inherit the trademark brand of “Success Pump” . The trademark brand “Success Pump” was first started in 1937 by Mr. Lu Nan of Peng Hu island located in Taiwan. Mr. Lu, with his knowledge of Ship repair mechanical technology, started the Lu Steel Factory company. In 1959, the company name was changed to Success Engineering Company, manufacturing refrigeration and air conditioning equipment. Water pump was one of the main products manufactured out of many. In the past, water pumps would use **GLAND PACKING** material seals, which caused water leakage, not allowing the air conditioning or refrigeration unit to reach the appropriate temperature. After obtaining licensing to purchase **MECHANICAL SEALS** from America along with cooperative research and development with **TECO Group**, we were able to develop the SUCCESS PUMP style TECO branded direct type motor. With this new technology, “SUCCESS PUMP” was able to come out with Taiwan’s first Success Pump branded direct-type water pump or more well know now as **CLOSED COUPLED CENTRIFUGAL PUMP** using the mechanical seal. Ever since Success Pump has come out of the market, it has received rave reviews from customers all over the world.



GA/GB/GS直結臥式端吸幫浦
GA/GB/GS CLOSED COUPLED CENTRIFUGAL PUMPS

揚程：80M 水量：16m³/min

特點：

- 直結式(同軸)與馬達同軸驅動，免對心調整。
- 構造簡單輕便，節省安裝空間。
- 軸封:機械式
- 葉輪：經平衡校正、震幅低、運轉平穩
- 搭配2極GA/GS系列，4極GB系列，電動機使用

用途:

- 空調、給水、冷卻循環水
- 工廠、冷凍、公共給水
- 加壓裝置水、水處理、工業用水等

HEAD: 80M CAPACITY: 16 M³/min

Features :

- The motor and the pump are connected through the same shaft reducing installation and maintenance costs.
- Compact design for saving space and easy install
- Mechanical Design
- Impeller : Balance Calibration、Smooth operation
- GA/GS Series- 2 Phase、GB Series- 4 Phase

Applications:

- Heating and Cooling water application
- Broad range of Industrial applications including but not limited to brewery, refinery, cooling, boiler feed, washing systems
- Water supply and water circulation systems



SDP臥式端吸幫浦 SDP END SUCTION CENTRIFUGAL PUMPS

揚程：100M 水量：20m³/min

特點：

- 設計尺寸依據DIN24255
- 性能符合ISO2858
- 採用背向拉出式(BACK-PULL-OUT)設計
- 法蘭規格DIN 16 BAR
- 葉輪：密閉式，經平衡校正、振幅低、運轉平衡
- 軸封選用：機械軸封、套裝式軸封、填料
- 搭配2極4極電動機使用

用途:

- 空調、給水、冷卻循環水
- 工廠、冷凍、公共給水
- 農業灌溉、河川取水
- 製程用水

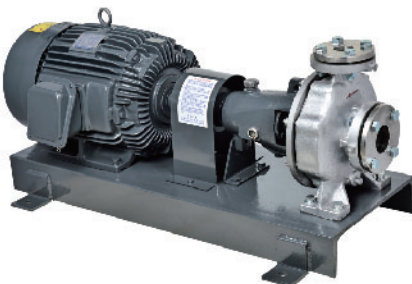
HEAD: 100M CAPACITY:20m³/min

Features :

- All dimensions designed according to the DIN24255 international standard.
- Pump conforms to ISO2858 international standard
- Back Pull Out design for easy maintenance
- Flange conforms to DIN 16 BAR international standard
- Mechanical Seal, suit type seal, packing.
- Can be fitted with 2 Phase and 4 Phase motor.

Applications:

- Heating and Cooling water application
- Broad range of Industrial applications including but not limited to brewery, refinery, cooling, boiler feed, washing systems
- Agricultural applications
- Water supply and water circulation systems



TN, TK沉水式清水系列 TN, TK SUBMERSIBLE SERIES (CLEAN WATER)

揚程：220M 水量：4.0m³/min

特點：

- 馬達構造採用水潤滑密閉式設計，免除按裝前灌水的困擾。
- 馬達軸承採用水潤滑專用高級鋁合金鋼，耐磨性特高，使用壽命長。
- 抽水機之葉輪皆經精密平衡校正，絕無振動現象發生，運轉順暢，寧靜無噪音。
- 效率高，馬力足無需例行保養，而且用電最省。
- 專用技術生產製造，提供您最佳的品質保證。
- 多樣化規格，提供您最經濟的選用。

用途：

- 高樓給水、噴水池、工廠、農漁業等清水之供給。

HEAD: 220M CAPACITY: 4.0M³/min

Features :

- The motor structure uses a sealed water lubrication design, avoiding inconvenient filling of water before use.
- The motor shaft uses special water lubrication, high class alloy (tin and copper) High rubbing erosion tolerance with long life span.
- Pump's impeller has been balanced and collaborated. No possibility for vibrations to from, smooth operation and free of noise.
- High efficiency, outstanding power, no need for extra maintenance. Save the use of electricity.
- Manufactured from professional production, providing you with the best quality assurance.

Applications:

- High level water supply, water fountains, factories, wells, fishery, etc.
- Clean water supply



SC / T-SC, SP, SPW沉水式污廢水系列 SUBMERSIBLE SERIES (SEWAGE, SUMP)

揚程：60M 水量：6 m³/min

特點：

- 馬達符合IEC IP68 F級絕緣設計標準
- 馬達內建過熱、過載，自動復歸型保護裝置
- 馬達外殼採用SUS304不鏽鋼成型，防止砂孔及鏽蝕
- 採用雙機械軸封，耐磨耗型。
- 葉輪經平衡校正、振幅低、運轉平穩
- 葉輪型式，可依環境不同搭配選用不阻塞開放式葉輪、鎢鋼切刀型葉輪等使用。
- 搭配著脫使用，節省檢修時間及費用。
- 依性能需求選用2極4極電動機使用

用途：

- 一般大樓、學校、家庭生活污水
- 產業化工廠、電鍍、食品加工廠等腐蝕性液體輸送
- 地下道雨水、衛生下水道、污水處理場之污水輸送
- 家畜(禽)養殖場，含有固狀物、雜物之液體輸送。可附加選配:

HEAD: 45M CAPACITY: 8.0 M³/min

Features :

- Motor conforms to IEC IP68 international standard
- Auto-cut motor protector to avoid motor burnout due to abnormal conditions.
- Motor housing, screws, bottom filter is made of stainless steel to ease corrosion of sump.
- Superior abrasion resistant double mechanical seal to ensure best effect .
- Can select different impeller types to suit different environments.
- Can be combined with guide rail system to reduce repair time.
- Can be equipped with 2 Phase or 4 Phase Motors.

Applications:

- Wastewater, sump drainage from hotels, schools, buildings, construction sites, and others.
- Water circulation for industrial and other similar environments.
- Underground water、accumulated water drainage、flood control
- Water circulation for agricultural, landscape, and other similar environments.



消防幫浦系列 FB- FIRE FIGHTING PUMP SERIES



特點：

- 自動加壓消防幫浦，主幫浦採用ISO2858國際標準規格聯軸式，多段式，雙吸式泵浦。
- 壓力強、性能高、效率優異。
- 採用整體化組合，將幫浦控制配電箱，壓力容器等相關器材組合，節省施工費用。
- 機種齊全，符合國家消防法規要求，通過消防基金會審核認可。

用途：

- 適用於消防泵、撇水泵、泡沫泵、採水泵等。

Features :

- Success FBHP auto boost pressure pump. The main pump uses ISO 2858 standard shaft, multi section double suction pumps.
- High pressure, high efficiency, and high performance design.
- Uses a one body design, combining the battery, pressure compartment, and other related parts to help save assembly fees.
- Many different models to fit different needs. In compliance with the fire safety laws and has been approved and recognized by the National Fire Department.

Applications:

- Water supply and auto boost water pressure to the following systems: fire sprinkler systems, fire hydrant, fire foam systems of buildings, factories, malls, schools, airports, etc.

供水加壓系列 MICP BOOSTER PUMP SYSTEMS



揚程：130M 水量：12 m³/min

特點：

- 採變頻器控制系統，達到恆壓要求，無水，無用水可停機，可漏水檢出，無水錘，緩啟動緩停止。
- 用一般M.S.控制系統（差壓式）。
- 可單獨、交互、並列運轉。

用途：

- 三溫暖、高球會館、淋浴系統、學校生飲系統、工廠給水、純水加壓系統鍋爐熱水迴水系統、市場、公園、大樓、飯店、醫院、社區加壓站、捷運車站、地下街。

HEAD: 130M

CAPACITY: 12m³/min

Features :

- Can be used with an Inverter controlled frequency system for constant water pressure. Auto stop system if no water is detected, detects water leak, start/stop buffer.
- Uses M.S. control system (pressure on-off)
- Capable of Single, parallel, and alternative operation

Applications:

- Saunas, golf club houses, shower system, school drinking fountains, factory water supplies, pure water pressure systems, hot water re-coil systems, markets parks, sea side recreation centers, sky scrapers, high rise buildings, hotels, hospitals, villas, compound pressure station, train stations, MRT, underground malls, etc.

SHV 豎軸離心渦卷污水幫浦

SHV VERTICAL CENTRIFUGAL VOLUTE SLURRY PUMPS

- 單段，底部吸入，開放式葉輪。
- 水量：~12m³/min
- 揚程：~46M
- 溫度：~150°C
- 特點：將傳動軸保護管與出水管分開成兩支管，適於抽送廢水，豎軸設計，不佔空間。
- 用途：污水清水或黏性 (SLURRY) 液之抽，腐蝕性溶液之抽送，高溫溶液之抽送。危險液易燃液或毒氣性液之抽送。

Features :

- Single stage, bottom suction, open impeller style.
- Capacity: Up to 3170 GPM
- Head: Up to 150 FT
- Liquid Temperature: Up to 300°F

Applications:

- Transmission shaft protecting pipe and the discharge pipe is separated. Suitable for pumping wastewater. Vertical shaft design to allow for smaller installation space.



SDM 橫軸離心渦卷雙吸幫浦

SDM HORIZONTAL CENTRIFUGAL VOLUTE DOUBLE SUCTION PUMPS

揚程: 200M 水量: 1800m³/HR

特點:

- 水平分離式泵殼進出口都在下半部殼體，便於檢修及維修
- 雙吸口/雙渦卷達到軸向、徑向力的平順
- 水流性能佳，低脈衝，低振幅，運轉平衡
- 磨耗環容易拆換，保護泵殼及葉輪不受磨損
- 軸封可選擇迫緊(PACKING)或各種不同型式的機械軸封

用途:

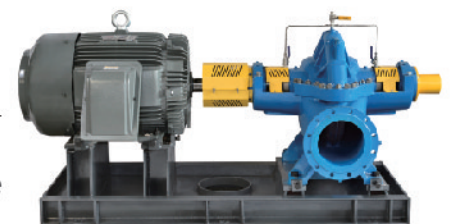
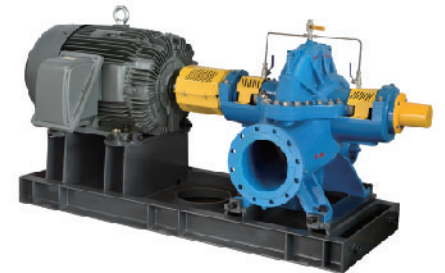
- 空調、給水、冷卻循環水
- 工廠、一般工業、公共給水
- 農業灌溉、河川取水
- 製成用水、紙漿及造紙用水
- 電廠供水

Features :

- Head: 200M
- Capacity: 1800m³/HR
- Balanced axially-spilt pump with output on the bottom to allow for easy maintenance.
- Double suction allows for radial force to be balanced and in the same direction.
- Excellent water flow, low vibration, low amplitude, and balanced.
- Removable wear rings for easy replacement. Protects the pump and impeller from been damaged due to friction.
- Many different styles of Mechanical Seals (PACKING) can be selected for your needs.

Applications:

- Processing and assembly plants, pulp and paper plants, primary metal plants, factories, municipal buildings, utility plants, marine factories, air conditioning requirements, agricultural needs, electric plants, etc.



SCV 豎軸離心斜流 (混流) 幫浦
SCV VERTICAL CENTRIFUGAL MIXED-FLOW PUMP



- 單段或多段，底部吸入，密封式或開放式葉輪。
- 水量：~600m³/min
- 揚程：可以選擇。
- 特點：不受吸上高度限制，揚程高，所佔空間小，馬達維護較沉水式簡單容易。
- 用途：排水用，灌溉用，防洪用，冷卻水用，工業製程用。

Features :

- Single or multi stage available. Closed or Open type impeller available.
- Head: Please provide requirement.
- Capacity: Up to 16000 GPM
- No limitation on the lift suction. High head ability. Smaller installation space . Motor maintenance easier than regular submersible pumps.

Applications:

- Land drainage. Irrigation and flood control plants. Industrial process needs, etc.

SVT 豎軸深井式多段離心透平幫浦
SVT VERTICAL DEEP WELL MULTISTAGE CENTRIFUGAL TURBINE PUMPS

水量：~30m³/min
揚程：-195m

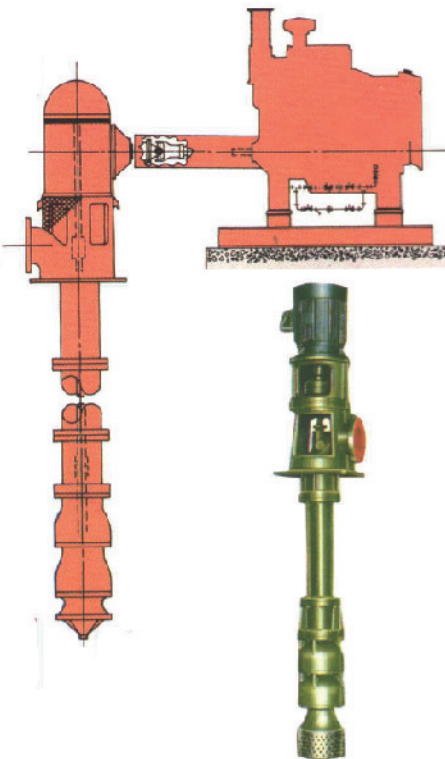
- 特點：不受吸上高度限制，揚程高，所佔空間小，馬達維護較沉水式簡單容易。
- 用途：深井灌溉用，加壓用，工廠給水用，原水抽送用，消防用，空調水循環用，海水之抽送。

Features :

- Capacity: Up to 7900 GPM
- Head: Up to 640 FT
- No limitation on the lift suction. High head ability. Smaller installation space . Motor maintenance easier than regular submersible pumps.

Applications:

- Deep-well irrigation. Intake of seawater. Air conditioning circulation. Process service. Fire-fighting. Water feeding service, etc.



成功幫浦® SUCCESS PUMP

SINCE 1959

如蒙洽詢請填寫下列需求：

1. 出水量：_____ M³/Min _____ LPM.
2. 總揚程：_____ M或_____ KPA
3. 液體：_____
4. 液體溫度：_____ °C或 _____ °F
5. 粘度：_____ CP
6. 比重：_____
7. 運轉溫度下之蒸氣壓力：_____ kg/cm²
8. 可用之淨有效吸入揚程：_____ M或_____ feet
9. 幫浦回轉數：_____ rpm
10. 驅轉馬達出力：_____ KW或 _____ HP
11. 電源特性：_____ 相 _____ HZ _____ volt

歡迎洽詢特殊規格幫浦
如：高壓、高溫、大流量.....等

REQUEST FOR INFORMATION

Please furnish us with the following information in detail if you have any questions or if you want to place an order with us.

1. Capacity: _____ M³/Min. _____ LPM.
2. Total Head: _____ M or _____ KPA
3. Liquid: _____
4. Temperature of liquid: _____ °C or _____ °F
5. Viscosity: _____ CP
6. Specific gravity: _____
7. Vapor pressure at operating temperature:
_____ kg/cm²
8. NPSH available: _____ M or _____ feet
9. Pump speed: _____ rpm
10. Drive motor output: _____ KW or _____ HP
11. Electric characteristics: _____ phase _____ cycle (HZ)
_____ volt

If you have any specification requirements.
Please contact our sales.

日義科技有限公司 ANDA TECHNOLOGY CO., LTD

新北市新莊區新樹路52-21號
Address: No. 52-21, Sinshu Rd., Sinjuang District
New Taipei City, Taiwan R.O.C.
Tel: 886-2-22085268
Fax: 886-2-22083758 • 886-2-22083759
E-Mail: sales@anda.com.tw
Web: www.anda.com.tw